

# THE **aura** OF AESTHETICS

ultra universal restorative system



**8**  
DENTINE  
SHADES

**3**  
ENAMEL  
SHADES

**ZERO**  
GUESSWORK!

SUPERIOR STRENGTH • HIGH POLISHABILITY • EASY TO SCULPT • SIMPLE SHADING  
LOW SHRINKAGE • HIGH GLOSS • NON STICKY



Your Smile. Our Vision.  
[www.sdi.com.au](http://www.sdi.com.au)

# SIMPLY ELEGANT

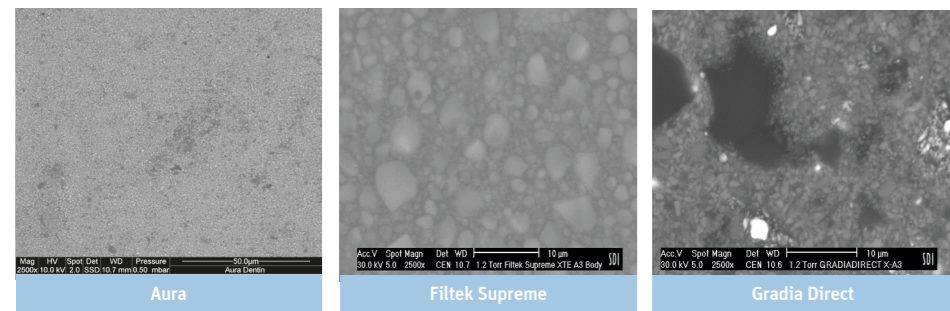
Dentine and enamel, with Aura ultra universal restorative system, is the easy solution to creating as close to nature anterior and posterior restorations.

Based on the natural make-up and colours of the dentine and enamel, Aura uses a logical yet innovative approach to shade-matching and layering in one single composite system. Its unique blend of filler and resin work in harmony to deliver the strength and aesthetics needed to provide long-lasting and life-like restorations with ease.



# EXPERIENCE THE MODERN MICROFILL

Aura combines a new low shrinkage resin composition with a unique morphology of ultra high density (UHD) filler. This provides the exceptional strength of a nano-hybrid composite that can withstand high compressive forces, coupled with an enamel shade range made from microfilled pre-polymerised particles for easy polishability and sculptability.



SEM images show the difference in size of fillers when compared with other composite materials. The smaller prepolymerised microparticles of Aura make it stronger than a standard microfill. This allows for fast and easy polishing to a long-lasting high gloss finish, without the "plucking effect" of large particles. Those with larger fillers are unable to achieve the same results.

- INCREASED WEAR RESISTANCE AND STRENGTH
- SMOOTH HIGH GLOSS FINISH EVERY TIME
- NON-STICKY CONSISTENCY MAKES IT SIMPLE TO SCULPT
- NO SLUMPING AND HOLDS ITS SHAPE
- QUICK AND EASY PLACEMENT IN SECONDS

0.5MM LAYER OF AURA ENAMEL ENSURES OPTIMAL SHADE MATCHING

DENTINE DETERMINES 95% OF TOOTH COLOUR

ENAMEL DETERMINES 5% OF TOOTH COLOUR

# ELIMINATE THE GUESSWORK

Aura removes the guesswork from finding the right shade for your restorations with its unique linear and scientific arrangement that brings predictability and simplicity to customising shades.

Selecting the dentine shade plays a major role in determining the overall tooth colour (hue). Nearly all dentine falls into the red-brown-yellow hue. Aura focuses on where tooth colours vary (the 'chroma') and how strong or weak the chroma is to recreate the natural make-up and colours of the enamel and dentine.

## Aura Dentine Chroma

Match the shade to the dentine and the gingival/cervical region using the large chroma scale Db, DC1, DC2, DC3, DC4, DC5, DC6 and DC7. Aura dentine shades are nano-hybrid composites based on a single opacity and single hue that is fluorescent. Its **excellent handling properties** allow busy clinicians to contour and shape **without slumping or sticking to instruments**, making it possible to achieve **beautiful restorations** quickly and easily - first time, every time!



## Aura Enamel Shade

Choose the enamel shade from the incisal edge of the neighbouring teeth. Aura enamel shades E1, E2 and E3 are microfilled for **easy polishability** to a mirror finish and a **high shine and gloss** that is retained indefinitely.



- **E1:** Young / bleached teeth (Most whitest/lightest, high opalescence, low translucency, designed to emulate young enamel)
- **E2:** Adult teeth (Neutral in colour, low opalescence, intermediate translucency, designed to replace adult enamel)
- **E3:** Senior teeth (Yellow/grey, high translucency, aged enamel)

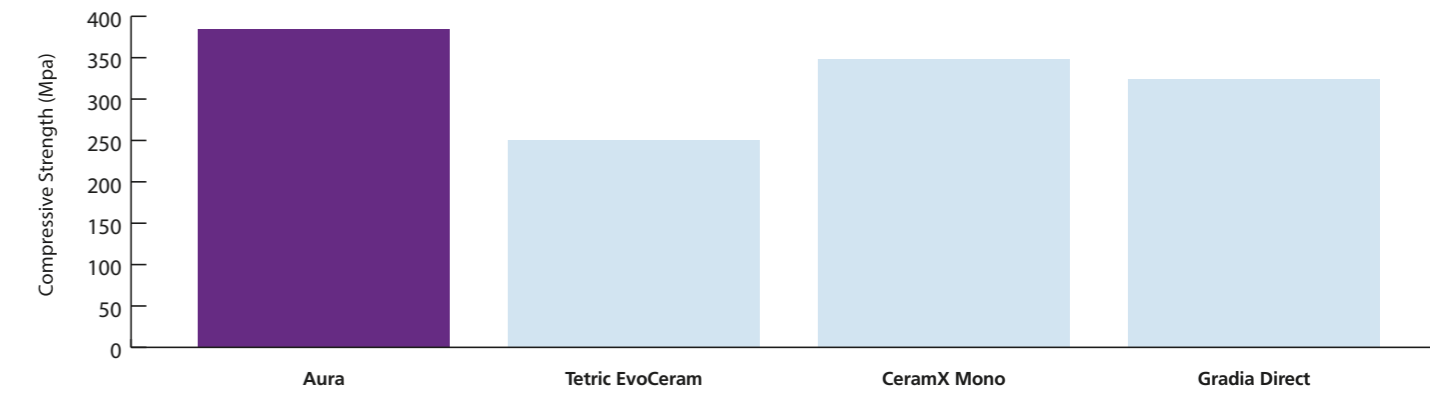
# STRENGTH & STABILITY

## Minimal volumetric shrinkage\*

Aura combines a new low-shrinkage resin composition with a new Ultra High Density (UHD) filler.

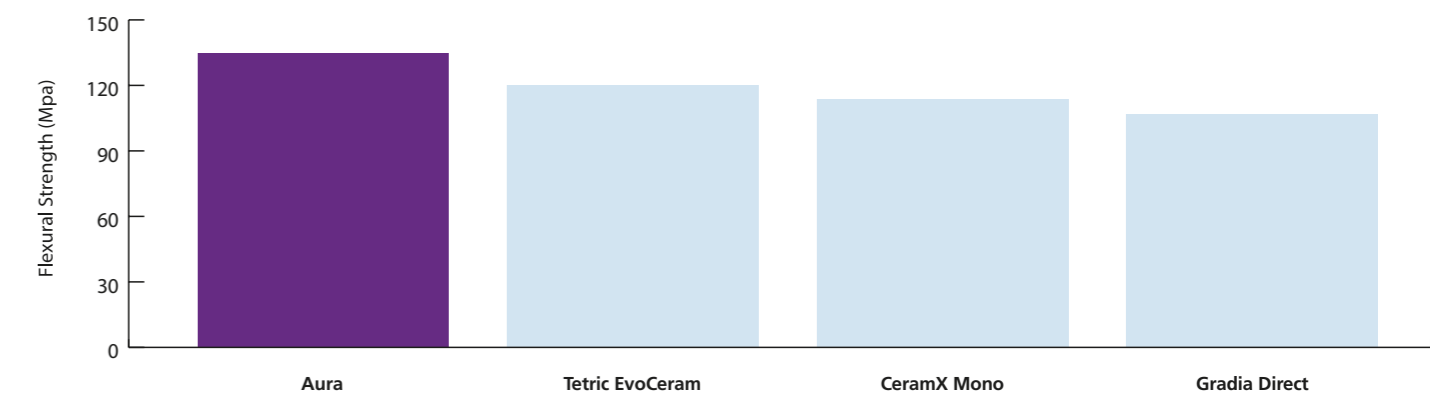
LOW  
**2.2%**  
VOLUMETRIC SHRINKAGE

## Impressive compressive strength\*



The unique morphology of the UHD filler provides an extremely high strength interface that can withstand high compressive forces.

## High flexural strength\*



Aura's superior flexural strength means it is able to withstand forces transmitted in the mouth.

\*Data on file

“The Aura system was chosen for the case due to its durability, natural selection of colours and its ability to allow underlying tooth structure to enhance the composite’s appearance.”

DR. HUGH FLAX DDS

Bulk Fill  
included in kit!



# ACHIEVABLE AESTHETICS

## CASE ONE

### Incisal Edge fracture

Traumatised upper lateral incisor. The tooth was repaired using DC3 to replace the dentine, followed by shade E2 enamel shade. Following etching and Stae resin application, the Aura was sculpted to recreate the incisal edge. The restoration was finished and polished to create an invisible lifelike restoration.

**Dr Linda Greenwall**



## CASE TWO

### Aura Bonding after Orthodontic Alignment

The incisal edges were bonded using Aura Composite in a segmental layering technique. left lateral incisor tooth was shortened slightly and the central incisor edges were recreated using E1 and E2 palatally. The incisal rim had been created in the enamel, mamelons were sculpted into the teeth as the incisal edges needed to show more translucency. The incisors were sculpted into three cones to represent the lobes of the tooth using a probe and a flat plastic. A small space was left in between so that the clear enamel was visible in between the lobes and at the incisal edge. As the teeth had been whitened, lighter shades were used. DC2, DC1 and DB bleached shade, followed by E1 enamel covering the labial surface. The form of the tooth was corrected and the incisal edge was polished.

**Dr Linda Greenwall**



Dr Robert Katz, orthodontist, undertook the Invisalign orthodontic treatment



**I have been using Aura for 5 years. It is easy to use, durable and has excellent aesthetics. There are a variety of shades. The Aura Composite system is versatile and can be used for many bonding situations. There are great shades for bonding after tooth bleaching.”**

**DR LINDA GREENWALL BDS, MGDS, RCS, MRD, RCS, MSC, FFGDP**



Your Smile. Our Vision.

For more details visit [www.sdi.com.au](http://www.sdi.com.au)

Australia: 1 800 337 003 | Austria: 00800 022 55734  
 Brazil: 0800 770 1735 | France: 00800 022 55 734  
 Germany: 0800 100 5759 | Ireland: 00800 022 55 734  
 Italy: 00800 022 55 734 | New Zealand: 0800 734 034  
 Spain: 00800 022 55 734 | United Kingdom: 00800 022 55 734  
 USA & Canada: 1 800 228 5166



## ORDER DETAILS

SYRINGES	ORDER CODE
<b>Aura Master Introductory Kit – Syringes</b> 8x 4g syringe (Db, DC1, DC2, DC3, DC4, DC5, DC6, DC7), 3x 3g syringe (E1, E2, E3), 1x 4g syringe (bulk fill), 2x AURA MASTER SHADE GUIDE	<b>8565100</b>
<b>Aura Syringe Starter Kit – Light</b> 3x 4g syringe (DC1, DC2, DC4), 1x 3g syringe (E2) 1x AURA LIGHT SHADE GUIDE	<b>8565102</b>
<b>Aura Syringe Starter Kit – Medium</b> 3x 4g syringe (DC1, DC3, DC5), 1x 3g syringe (E2) 1x AURA MEDIUM SHADE GUIDE	<b>8565104</b>
<b>Syringe Refill Db – 4g</b>	<b>8560011</b>
<b>Syringe Refill DC1 – 4g</b>	<b>8560004</b>
<b>Syringe Refill DC2 – 4g</b>	<b>8560005</b>
<b>Syringe Refill DC3 – 4g</b>	<b>8560006</b>
<b>Syringe Refill DC4 – 4g</b>	<b>8560007</b>
<b>Syringe Refill DC5 – 4g</b>	<b>8560008</b>
<b>Syringe Refill DC6 – 4g</b>	<b>8560009</b>
<b>Syringe Refill DC7 – 4g</b>	<b>8560010</b>
<b>Syringe Refill Bulk Fill – 4g</b>	<b>8560012</b>
<b>Syringe Refill E1 – 3g</b>	<b>8560001</b>
<b>Syringe Refill E2 – 3g</b>	<b>8560002</b>
<b>Syringe Refill E3 – 3g</b>	<b>8560003</b>

COMPLETS	ORDER CODE
<b>Aura Master Introductory Kit – Complots</b> 24x 0.25g complots (Db, DC1, DC2, DC3, DC4, DC5, DC6, DC7) 24x 0.2g complots (E1, E2, E3) 3x 0.25g complots (bulk fill) 1x complet applicator 2x AURA MASTER SHADE GUIDE	<b>8565101</b>
<b>Aura Complet Starter Kit – Light</b> 60x 0.25g complots (DC1, DC2, DC4) 20x 0.2g complots (E2) 1x AURA LIGHT SHADE GUIDE	<b>8565103</b>
<b>Aura Complet Starter Kit – Medium</b> 60x 0.25g complots (DC1, DC3, DC5) 20x 0.2g complots (E2) 1x AURA MEDIUM SHADE GUIDE	<b>8565105</b>
<b>Complet Refill Db – 0.25g</b>	<b>8565011</b>
<b>Complet Refill DC1 – 0.25g</b>	<b>8565004</b>
<b>Complet Refill DC2 – 0.25g</b>	<b>8565005</b>
<b>Complet Refill DC3 – 0.25g</b>	<b>8565006</b>
<b>Complet Refill DC4 – 0.25g</b>	<b>8565007</b>
<b>Complet Refill DC5 – 0.25g</b>	<b>8565008</b>
<b>Complet Refill DC6 – 0.25g</b>	<b>8565009</b>
<b>Complet Refill DC7 – 0.25g</b>	<b>8565010</b>
<b>Complet Refill Bulk Fill – 0.25g</b>	<b>8565012</b>
<b>Complet Refill E1 – 0.2g</b>	<b>8565001</b>
<b>Complet Refill E2 – 0.2g</b>	<b>8565002</b>
<b>Complet Refill E3 – 0.2g</b>	<b>8565003</b>

M100264 B 07-09-2017

