

SenSafe® Iodine Test Strips

Alternate Directions

For all iodinated dental unit waterline treatment products, including the DentaPure™ Cartridge and Hu-Friedy Waterline Filter

Iodine ppm level readings and impact on iodinated DUWL treatments products

- If the iodine parts per million (ppm) reads below 0.5, replace your treatment product.
- If ppm reads 0.5 or greater, continue normal use for another week and then re-check levels.

NOTE:

- These tests strips should only be used to determine the level of iodine present in Dental Unit Waterlines, and should not be used to measure the presence of Colony Forming Units (CFU's).
- It is recommended to check the iodine level at 11 months, or as you approach 240L of water to ensure that the iodine output has not fallen below 0.5 ppm—particularly if you have a very busy practice.



Common Errors:

- Not flushing the system may show a false negative (iodine levels below 0.5 ppm).
- Spraying water directly down into the cup without tilting it may cause iodine to dissipate resulting in a false negative (iodine levels below 0.5 ppm).
- Matching color from the back of the test strip instead of the window may give you an unclear color match.
- Failure to reseal the bottle will cause test strips to lose accuracy over time.

This is the back of the strip.

Do not match color from this side.



This is the front of the strip. Note that the window is visible.

This is the correct side to look for a color match.

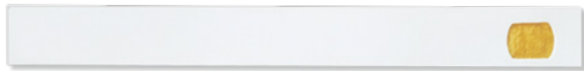


SenSafe® Iodine Test Strips

Testing Strip Procedure

1. Perform a two-minute flush of all dental unit waterlines.
2. Remove the syringe tip from air water syringe.
3. Remove one test strip from bottle and reseal bottle to maintain freshness of other test strips.
4. Take a 20mL water sample by tilting the cup (a plastic dental cup is acceptable) and allowing the water to run continuously down the interior side of the cup to avoid turbulence of the water.
5. Follow **Method A** as noted on the test strip bottle:
 - a. Dip one test strip for 10 seconds in the water sample using a constant, gentle back-and-forth motion.
 - a. Remove the strip from the water and wait 30 seconds.
 - a. Match color appearing in the small window of the test strip with the associated Method A color chart with ppm levels from 0.0 ppm – 5.0 ppm.

For better color matching, fold the dipped strip in half, so that the window side of strip is facing out (**see image below**).

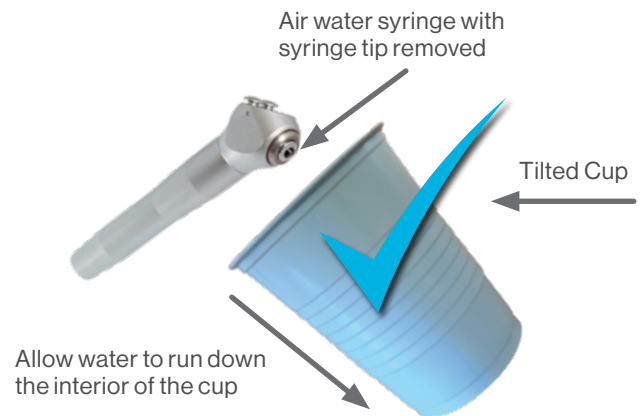


Unfolded Strip

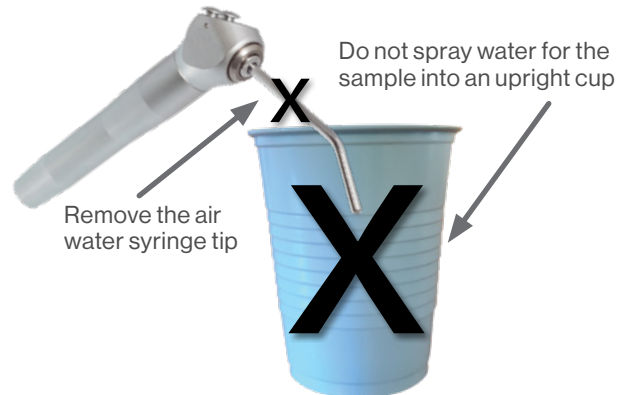


Folded strip with window facing out

CORRECT:



INCORRECT:



For more information, contact Customer Service at crosstex@crosstex.com or 888-276-7783
For Technical Support contact dentapuretechnical@crosstex.com

All product names are trademarks of Crosstex International, Inc., a Cantel Medical Company, its affiliates or related companies, unless otherwise noted. Marks not registered in all jurisdictions. SenSafe® is a registered trademark of Industrial Test Systems, Inc.

© 2021 Crosstex International, Inc. All rights reserved. DLIT01529 Rev A 0221