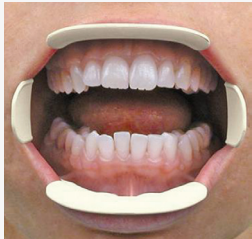
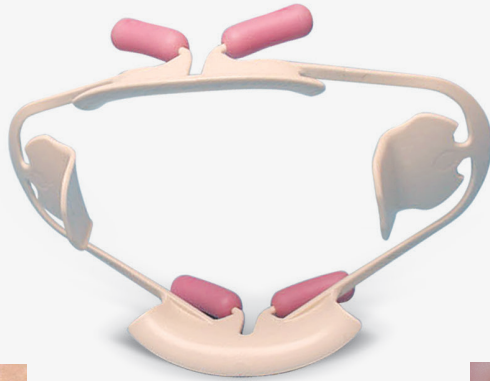
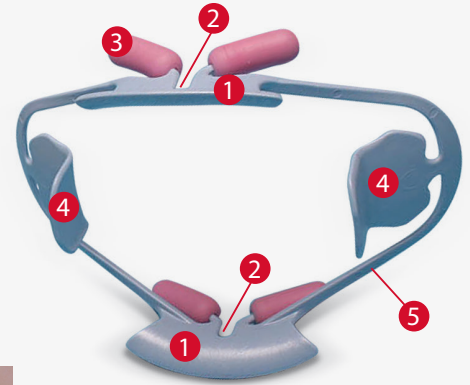


Maximum visibility and patient comfort!



Universal



Small

## ComfortView™ Lip & Cheek Retractor

- Retracts lips and cheeks for optimal buccal and gingival access
- Ideal for both short and long procedures
- Anatomic design with cushioned lip-supports that position lips away from anterior teeth and gums
- Suitable for use in diagnostic, preventative, therapeutic dental applications, digital impression scanning, in-office tooth whitening and intra-oral photography
- Autoclavable, Latex free

9061381 Universal ComfortView Lip and Cheek Retractor  
2 per box (white)

9061383 Small ComfortView Lip and Cheek Retractor  
2 per box (blue)

9061382 ComfortView Refill Cushions -10 per pack

- 1** Anatomically shaped lip holders for superior access to buccal and gingival areas – maximum access and visibility
- 2** Lip holders with opening for the frenulum provides maximum patient comfort – for short- and long-term procedures
- 3** Cushioned lip-supports position lips away from anterior teeth and gums – allow for visual and instrument access
- 4** Lateral flaps gently hold cheeks and contract for easy placement/removal – ensure patient comfort and assist in keeping patient's mouth open.
- 5** ComfortView frame material and cushions are autoclavable.

The '3Ts' to a more efficient crown and bridge. Every time!



## Two Striper®

Multi-Use Diamonds

Engineered to meet the highest standards: yours

Feel the difference from the unique combination of select grade natural diamond crystals and P.B.S.® braze technique.



## Traxodent®

Hemodent® Paste Retraction System

Traxodent is the #1 choice<sup>1</sup> among dental professionals. It works fast, provides accurate impressions and rinses easily—so no film worries!

Only Traxodent delivers all of this:

- Easy and effective hemostatis & retraction - works within 2-3 minutes
- Excellent moisture control - predictable results and accurate impressions
- Rinses clean with no residual film - no interference with future bonding & cementation

new!  
Traxodent®  
Unit Dose



## Triple Tray®

Dual-Arch Impression Tray

Successful in over 100 million impressions - Premier® Triple Tray® is the professions' most trusted name for accurate dual-arch impressions. The thin, adaptable mesh supports your impression material, ensures complete intercuspatation, resists tearing and is proven to have "...[the] least water sorption"<sup>2</sup>, which reduces the possibility of distortion.



For more information on these and additional products, call 610-239-6000.  
Available through your authorized dealer.

**premier®** Inspired solutions  
for daily dentistry™

Premier® Dental Products Company • 1710 Romano Drive, Plymouth Meeting, PA 19462, USA  
Phone 888-670-6100 • 610-239-6000 • Fax 610-239-6171 • www.premusa.com • E-mail: dentalinfo@premusa.com

\*Two Striper and P.B.S. are registered trademarks of the product manufacturer, Abrasive Technology, Inc  
1. SDM Data 2017. / 2. Independent Research Organization, July 2000

0118037 Rev6 Con200