

# Access<sup>®</sup> Edge & AccessFLO<sup>®</sup>

## MAKING TISSUE RETRACTION EASIER WITH BETTER CLINICAL OUTCOMES

### ACCESS<sup>®</sup> EDGE AND ACCESSFLO<sup>®</sup> KAOLIN CLAY RETRACTION PASTES:

#### Two Different Viscosities to Meet Your Preference and Clinical Requirements.

Whether you prefer a thicker, more viscous paste that provides more 'push' or a more flowable paste that more easily penetrates the sulcus, with Centrix you can choose the right material for each case and each prep site. **Access Edge** and **AccessFLO** use kaolin clay that helps absorb fluids, plus 15% aluminum chloride to quickly constrict cut capillaries, to provide a clear, dry field with open margin access in every case.



Whether used by itself or in 2-cord techniques, Access Edge and AccessFLO make no compromise for gingival retraction and hemostasis.

### ACCESS EDGE AND ACCESSFLO BOTH FEATURE:

#### Dual action fluid control

- Kaolin clay absorbs excess fluids.
- Non-sticky, water-soluble formula rinses completely away for a clean, open sulcus.
- 15% aluminum chloride stops bleeding fast - in just 2 minutes; contracts epithelial tissue for more access.

#### Maximum Retraction

- Atraumatic paste maximizes sulcular expansion.
- Can be used as a second cord in 2-cord techniques.
- GingiCap<sup>®</sup> closed-foam compression caps that provide constant pressure without deforming included in every kit (anterior and posterior sizes).



THE DENTAL  
ADVISOR  
++++½

#### Gentle, effective, safe tissue management

- Atraumatically preserves the epithelial attachment and gingival height/contour. No need to wait for tissue healing.
- Enables healthy tissue management during direct composite restorations, implant placement and digital impressing.
- More comfortable for patients.
- Durable, high strength tubes fit in any standard composite gun. No breakable glass cartridges. No special gun required.
- Individually foil-sealed packages ensures fresh, perfect material. No dried out paste; no waste.
- Convenient unit dose tubes eliminate cross-contamination.

## TISSUE MANAGEMENT MADE EASY.

Built-in astringency. Simple delivery.

Easy adaptation to any case, any gingival condition.

Access<sup>®</sup> Edge  
&  
AccessFLO<sup>®</sup>

### Access<sup>®</sup> Edge

High-viscosity kaolin clay retraction paste maintains its density to better 'push' the soft tissue out and away from the tooth, opening the sulcus and exposing the margins of the prep.



Access Edge: atraumatic gingival retraction; controls gingival fluids.



Controlling the bleeding and exposing the margin preparation before impression with Access Edge.

“

*Two Minutes of Access Edge - it absorbs all the fluids, doesn't dry out like the other brand.. No bleeding, margins are exposed, and I'm ready to take my impression.*

~ DR. MARTY ZASE, DMD, MAGD, AAACD COLCHESTER, CT USA

*Access Edge makes dentistry easier than it's ever been. As a prosthodontist, I practiced for 25 years placing cord despite its high risk for gingival tissue rebound and shrinkage, causing unaesthetic gum height and exposed crown margins. I tried them all... [brand T] was sticky and never rinsed away well causing re-bleeding.*

*Now, I truly get enough retraction and use Access Edge on every case, from prep to try-in, to control the fluids in the sulcus. I no longer pack cord.* ~ DR. PABLO CUEVAS, DDS FAIRFIELD, CT USA

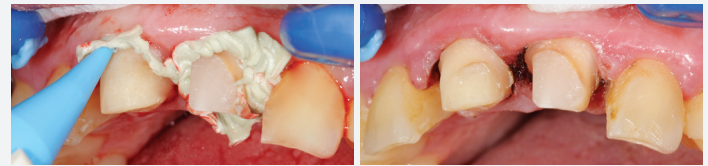
### AccessFLO<sup>®</sup>

AccessFLO low-viscosity, flowable kaolin clay retraction paste is made to more easily flow deep into the sulcus and capture the prep margins.

“

*Access Edge and AccessFLO are on top of my armamentarium when it comes to atraumatic margin exposure, control of sulcular fluids and predictable hemostasis.*

~ DR. CRISTIAN ENACHESCU, ROMANIA



AccessFLO is gentle to the gingiva as it creates great retraction and hemostasis.

## ORDERING INFORMATION

- 360113** Access<sup>®</sup> Edge 15 tubes, 30 dispensing tips and GingiCaps (10 regular & 10 large)
- 360114** Access<sup>®</sup> Edge 60 tubes, 120 dispensing tips and GingiCaps (30 regular & 30 large)
- 360122** AccessFLO<sup>®</sup> 15 tubes, GingiCaps (10 regular & 10 large)

- 360123** AccessFLO<sup>®</sup> 60 tubes, GingiCaps (30 regular & 30 large)
- 130650** Snap-Fit<sup>™</sup> Gun
- 130651** Snub Nose Snap-Fit<sup>™</sup> Gun
- 640002** 30 x 16-gauge Needle Tip
- 360056** GingiCap<sup>™</sup> Assorted Refill Kit (30 regular & 30 large)

Call **800.235.5862** or contact your preferred dealer.

© 2022 Centrix, Inc. All rights reserved. Access Edge & AccessFLO are registered trademarks of Centrix, Inc.  
Photo credits: Case 1 – Dr. Miguel Ortiz, Brookline, MA., USA. | Case 2, 3 & 4 – Dr. Cristian Enachescu, Romania.  
MK0182 REV B

**centrix**<sup>®</sup>  
MAKING DENTISTRY EASIER<sup>™</sup>